

Inspection by the Invasive Species Program
Division of Ecological Resources
Minnesota Department of Natural Resources

Lake: Clearwater **DOW Number:** 86025200 **Date of Inspection:** 8 July 2015; 13 July 2015

County: Wright **Observer[s]:** Christine Jurek, Invasive Species Specialist; Courtney Millaway, Natural Resource Specialist; Nick Brown, Invasive Species Specialist; Keegan Lund, Invasive Species Specialist; MN DNR Intern and Volunteer

Type of inspection: Zebra Mussel Shoreline and Snorkel Search

Author[s] of report: Courtney Millaway; Christine Jurek

Date of report: 17 July 2015

Summary: On 5 July 2015, a zebra mussel was discovered by a citizen while swimming on the north side of the east basin of Clearwater Lake, Wright County (86025200). The zebra mussel was attached to a native mussel and was verified by MN DNR staff (Photo 1). The site is sandy with many native mussels and is a popular swimming destination for lake users.

A shore-based investigation was conducted on 8 July 2015 to look for additional mussels; the search was conducted on foot and no zebra mussels were found. The search continued on 13 July 2015 with additional staff support utilizing both shoreline search methods and snorkeling. Zebra mussels were found attached to native mussels (Photo 2). Zebra mussels ranged from approximately 1.4 cm to 2.6 cm in length. A total of nine adult zebra mussels were found at two main locations approximately one mile apart (Figure 1).



Photo 1. Zebra mussel found by a lake user swimming in Clearwater Lake, Wright County (86025200) on 5 July 2015. Photo was taken on 5 July 2015.



Photo 2. Zebra mussels attached to native mussels on Clearwater Lake, Wright County (86025200). Photo was taken on 13 July 2015.

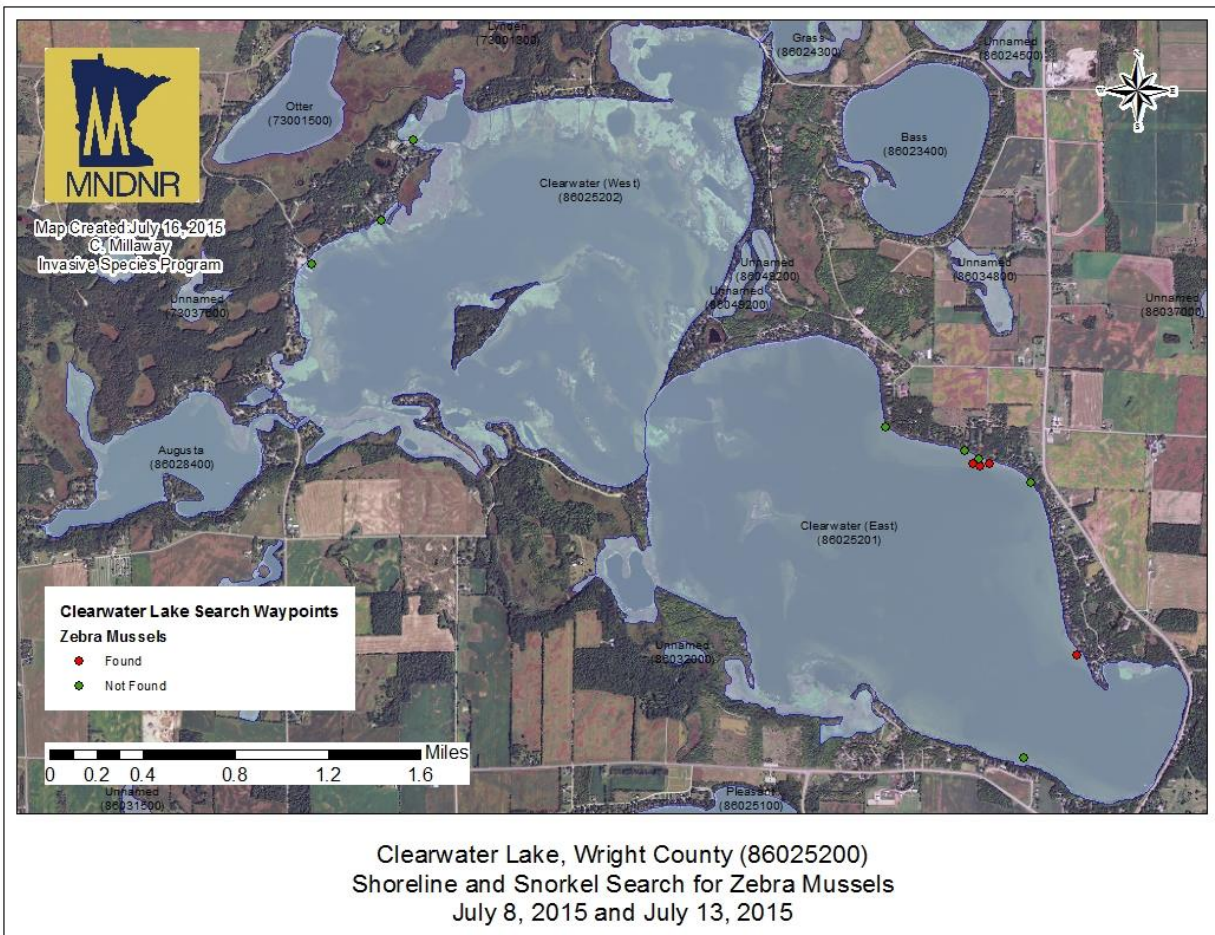


Figure 1. A map representing locations of adult zebra mussels found during a two day shoreline and snorkel search on Clearwater Lake, Wright County (86025200).