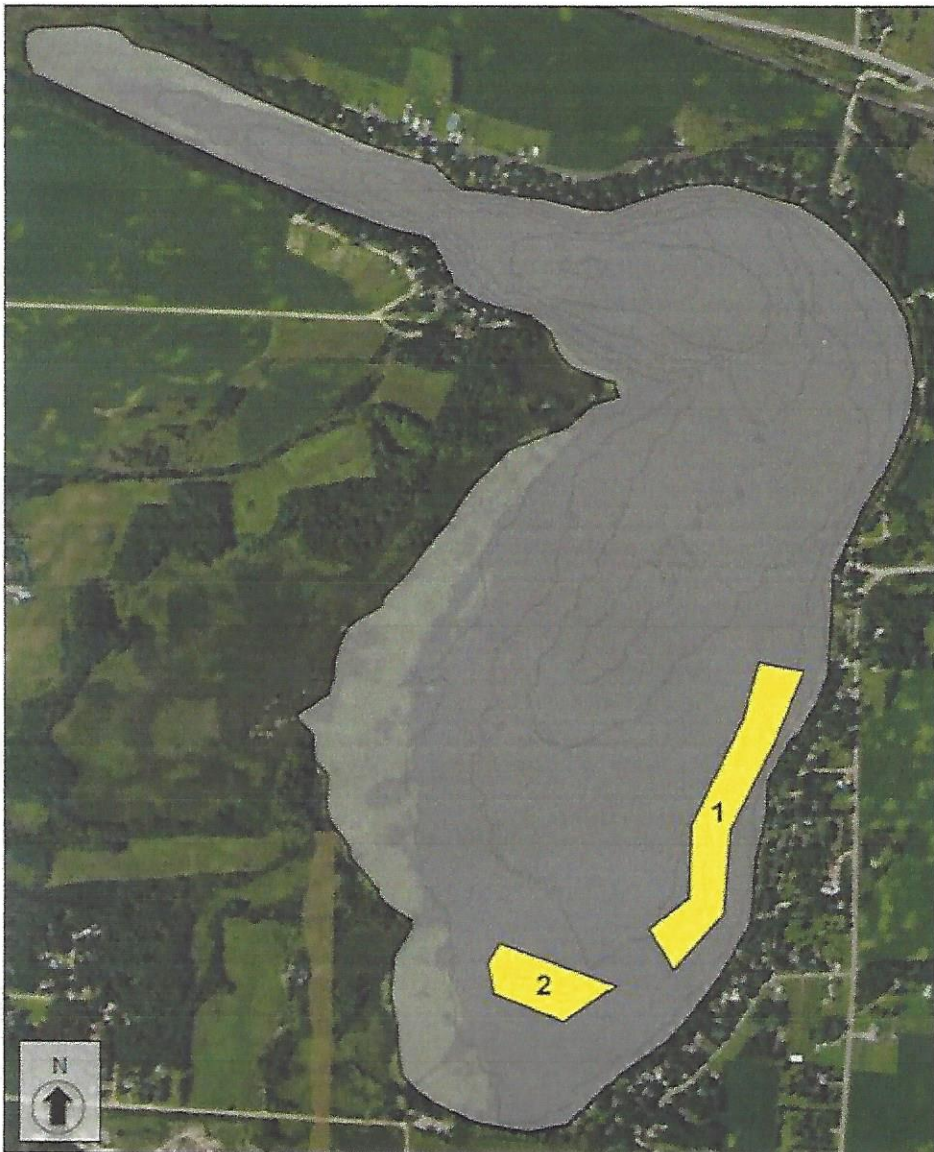


## 2018 Eurasian Watermilfoil Delineation Lake John (# 86-0288)



### Potential Treatment Plots

Plot *	Acres	Mean Depth (ft)	Mean EWM Density (1-3)
1	12.8	8.0	2.0
2	5.3	6.2	1.5

**Total 18.1**

\* Plots numbered in recommended order of priority (1=highest) based upon EWM density, plot size, and potential for impairment and spread.

Surveyed: June 18, 2018  
Methods: Visual, Sonar, Rake  
Surveyor: JA Johnson

 Certified Lake Manager  
[www.NALMS.org](http://www.NALMS.org)

Map produced for the  
Lake John Association by:

 **freshwater**  
SCIENTIFIC SERVICES

15771 Creekside Lane  
Osseo, MN 55369  
[fixmylake.com](http://fixmylake.com)  
(651) 336-8696